

Michigamme Township

Recreation Plan 2021-2025



INTRODUCTION

Michigamme Township is located on the western border of Marquette County and consists of a mostly rural landscape with a small, developed area along US-41/State Hwy 28. Most activity is located in the southern part of the Township, including the townsite, the highway, and Lake Michigamme with its recreation opportunities.

The remainder of the Township includes forests, lakes, rivers and wetlands, providing a vast area for land and water based recreational opportunities.

1. COMMUNITY DESCRIPTION

The unique location of Michigamme Township allows for an abundance of year-round recreational opportunities. The Ottawa National Forest covers much of the northern part of the Township. A large portion of McCormick Tract Wilderness, a small portion of Craig Lake State Park, the majority of Van Riper State Park and most of Lake Michigamme rest within the Township. There are also numerous lakes and a few small public parks. The North Country Hiking Trail and Moose Country Snowmobile Trail #8 pass through. This land base offers extensive hiking, fishing, biking, and camping opportunities in the warmer months. During the winter, ice-fishing, snowmobiling, cross-country skiing, and snowshoeing are popular activities.

Forestlands

The forests of Michigamme Township and the surrounding area have matured again since the early mining and logging days denuded the landscape. The forests consist mostly of a mixture of northern hardwood, White Pines and lowland conifers that provide continued opportunities in forestry management and production. The forests are also an important part of the culture of the Township, providing many options for outdoor recreation such as hunting, hiking, fishing, camping, snowshoeing, skiing, canoeing/kayaking, biking, running, scenic viewing, and wildlife and nature experiences. A sliver of the Ottawa National Forest rests in the Northern part of the Township and contains the McCormick Wilderness which is managed by the U.S. Forest Service.

Wetlands

Wetlands are often referred to as marshes, swamps, or bogs. The U.S. Army Corps of Engineers defines wetlands as “those areas inundated or saturated by surface or ground water at a frequency and duration sufficient to support, and that under normal circumstances do support, a prevalence of vegetation typically adapted for life in saturated soil conditions”.

Residents of Michigan are becoming more aware of the value of wetlands. Beyond their aesthetic value, wetlands improve water quality of lakes and streams by filtering polluting nutrients, organic chemicals and toxic heavy metals. Wetlands are closely related to high groundwater tables and serve to discharge or recharge aquifers. Additionally, wetlands support wildlife, and wetland vegetation protects shorelines from erosion.

According to the Department of Environmental Quality Wetlands, there are designated wetlands in the northern part of the township going as far south as the central part of the McCormick Tract Wilderness called “Mulligan Swamp”. Smaller pockets of wetlands exist throughout the Township. Wetlands are an important, and often undervalued, part of the township’s recreation opportunities.

Soils

Soil composition analysis is used in land use planning to predict soil behavior for selected land uses. Depending on the planned use of the land, improvements may be needed to overcome soil limitations. This information is useful to community officials, engineers, developers, and homebuyers. According to the United States Natural Resources Conservation Service, most of the soils within the township are Soils and Miscellaneous on Bedrock-Controlled Moraines. The soils surrounding Lake Michigamme are Soils on Disintegration Moraines. The soils in the northern part of the township are a combination of Soils on Till-Floored Lake Plains and Dissected Moraines, and Soils on Outwash Plains, Terraces, and Beach Ridges. The majority is gneiss and granite with some quartzite in the northern part of the township and around the Lake Michigamme area. There is a small amount of Iron formation around the Lake area as well.

Water Resources

Both human and natural ecological systems depend upon water. Perhaps the most valuable natural resource of Michigamme Township is the abundance of fresh water. Having been of historic importance, it is also the resource that will, to a great extent, determine the future of the area. Thus, the management of water becomes a prime factor in planned development. The principal

reasons for controlling development on or near water are to protect watersheds to preserve the quality and quantity of the water supply, prevent damaging floods, and protect recreation lands.

Michigamme Township contains a lot of shoreline on Lake Michigamme, as well as the many other small lakes in the Township. The shoreline is a major attraction for local residents and tourists and helps to form the overall character and attractiveness of the community. Lake Michigamme is one of the most important environmental features in the Township given its overall impact on the Township's history, economy, development, and character. There are two larger rivers that connect water bodies within the County of Marquette. The Peshekee River is a 31-mile-long river that runs south into Lake Michigamme. The Yellow-Dog River's main branch begins at the outflow from Bulldog Lake in the Ottawa National Forest on the boundary between Baraga and Marquette counties. The river's mouth is on Lake Independence, near Big Bay, Michigan, and is part of the Lake Superior watershed. It is about 32 miles in length with nearly 85 miles of tributaries.

Fish and Wildlife Resources

The Michigan DNR maintains a Michigan Natural Features Inventory (MNFI) listing plant and animal resources that are endangered, threatened, or of special concern. The lists include all elements (species and natural communities) for which locations have been recorded in the database for each county. Information from the database cannot provide a definitive statement on the presence, absence, or condition of the natural features in any given locality, because much of the state has not been specifically or thoroughly surveyed for their occurrence and the conditions at previously surveyed sites are constantly changing. The County Elements Lists should be used as a reference of which natural features currently or historically were recorded in the county and should be considered when developing land use plans.

Endangered fish species include the Redside Dace which is a small minnow. Threatened animal species include the Redshouldered Hawk, Common Loon, Lake Herring or Cisco Fish, and Delicate Vertigo. Animal species of special concern include the Bald Eagle, Northern Goshawk, Osprey, Wood Turtle, Snails, the Crested Vertigo, and Mystery Vertigo. Insects include the Extra-striped Snaketail, Splendid Clubtail, and Rapids Clubtail.

Endangered plants include the Small Yellow Pond Lily. Threatened plant species include the Goblin Moonwort, Calypso or Fairy-Slipper, Assiniboia Sedge, Large Toothwort, Woodland Everlasting, Hedge-Hyssop, Farwell's Water Milfoil, Ginseng, Sweet Coltsfoot, Seaside Crowfoot, Prairie Buttercup, and New England Violet. Special plant species of concern include the Purple Clematis, Male Fern, Fragrant Cliff Wood Fern, Fir Club Moss, and American Shore-Grass.

*Michigamme Township
RECREATION PLAN 2021-2025*

There is significant interest in game birds and fish in Marquette County, such as Ruffed Grouse and Trout. Others are also interested in songbirds such as the endangered Kirtland's Warbler. Each species requires different variations of the four basic habitat components which are food, water, cover, and space. It is important to determine what species are likely to frequent the existing habitat and then determine the specific habitat needs of those species. It is also important to keep in mind that for every management decision implemented, some species will be benefited, and others will be negatively impacted. There are always tradeoffs involved. Michigan provides a landowner's guide for species management and more information is available from the local conservation district.



2. ADMINISTRATIVE STRUCTURE

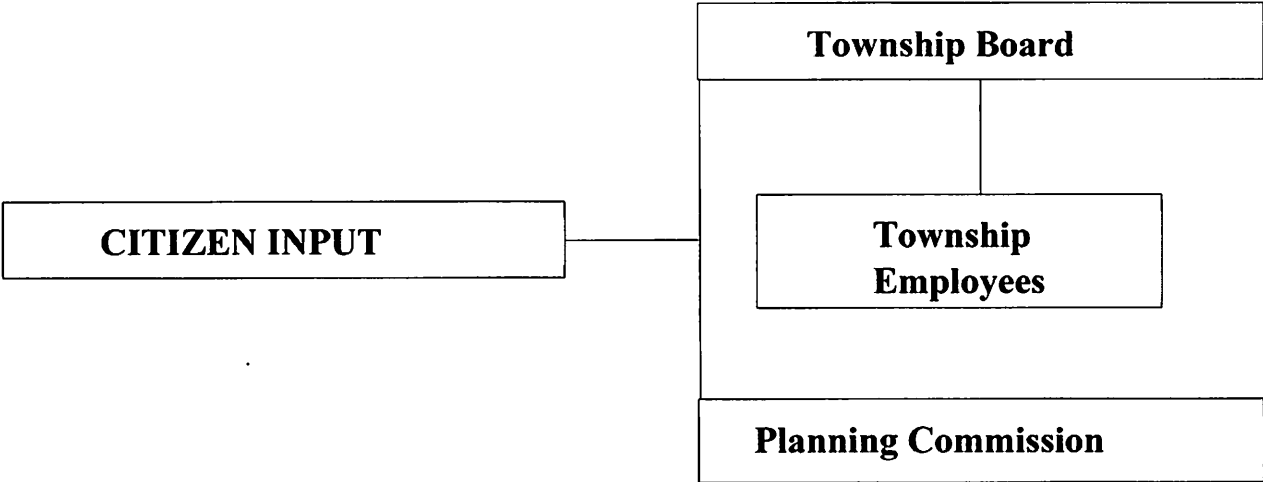
In the township, park and recreation facilities are managed primarily by the township’s public works employees, with oversight by the township’s Supervisor and Board of Trustees.

The township’s Planning Commission also makes recommendations on initiatives they may create, sending them to the Board of Trustees for approval. An organization chart is included in this plan.

The Village supports and maintains recreation facilities through annual General Fund appropriations. In 2019, the township expended approximately \$145,000 for maintenance and operations of recreation facilities and capital expenditures.

The township is interested in partnering with community volunteers or community organizations for the renovation or creation of new recreation facilities. The township has a very active base of citizens that are involved in variety of projects to improve the livability of the townsite. Township officials plan on teaming up with volunteers to help provide the community’s local match on any grant applications.

Township Organization



3. RECREATION INVENTORY

The inventory for the following recreational facilities was gathered using field observation and existing Township information.

The following are township-owned facilities:

Michigamme Township Park

This 7-acre park is located on the northwestern shores of Lake Michigamme. It includes a small swimming beach, baseball field, tennis courts, basketball court, volleyball court, canoe launch and boat launch, restrooms, pavilion, playground, kitchen facilities, and a public dock.

Michigamme Township Campground and Beach

The Township Campground is located along Lake Michigamme south of town. It has rustic camping with no dump station. The beach area has vaulted toilets that are functionally obsolete. A boat launch is also available and is used frequently by township residents and visitors. The boat launch needs renovation.

Block Park - corner of Maple Street and Barnum Street

This small park is across from the old Michigamme Public School. There is a swing set, slide, and merry-go-round.

Township Community Building

The Township Community Building is located on the Main Street in the village of Michigamme. It serves as a community gathering center and provides a basketball court and fitness room, as well as meeting rooms made available to the cribbage league, sewing groups and yoga classes.

The fitness room has been a recipient of grants to purchase exercise equipment from the Superior Health Foundation, and Western Marquette County Health Foundation. The Superior Health Foundation grant totaled \$7,022. The Western Marquette County Health Foundation grant totaled \$2,860.

Michigamme Township
RECREATION PLAN 2021-2025

The Community Building has a certified kitchen that is used to prepare and serve meals to the Michigamme Area Seniors organization. This organization serves approximately 65-70 meals to the area seniors once per week. The kitchen also hosts events for fund raising activities. The Community Building serves as the heart of the Community activities.

Township Ice Rink

The township constructs and maintains a lighted outdoor ice rink on the Main Street as weather permits.

US-41/M-28 Roadside Park

The Andy Sikkema Roadside Park is located on Lake Michigamme. It includes toilets, picnic tables and grills. This park offers spectacular views of the lake.

The following are facilities owned by other units of government:

Craig Lake State Park

A small portion of Craig Lake State Park is located in Michigamme Township. It is the most remote state park in the system and was acquired by the State in the 1960's. The park contains six full lakes with muskellunge, bass, walleye, and northern pike, and a variety of wildlife such as deer, black bear, beaver, loons and a portion of the Upper Peninsula moose herd. Craig Lake is a wilderness area that spans 6,983 acres mostly in Baraga County with a very small portion in Marquette County. Access into the park can be an adventure. Vehicles with high ground clearance are recommended. Snowmobiles are allowed with 4" of snow or more on the ground. Cross-country skiing is permitted; however, the trails are not groomed. This park offers some of the most rugged trails in Michigan for hiking. Hunting is allowed. There are two cabins for rent and one yurt located just a two-mile hike from the parking area. There is also a metal detecting area.

Van Riper State Park

Van Riper State Park is located in both Champion and Michigamme Townships and comprises 1,044 acres. There is 1/2 mile of frontage on Lake Michigamme and 1 1/2 miles of frontage along the Peshekee River. The park has a nice sandy beach with concessions, a playground, picnic area, cabins, modern campsites, rustic campsites and a boat launch. Many outdoor activities include hunting, fishing, biking, swimming, Michigan State Park explorer program, watchable wildlife (maybe even a moose!), cross-country skiing, snowmobiling and metal detecting.

McCormick Tract Wilderness (Ottawa National Forest)

McCormick Tract Wilderness Area includes 16,850 acres, or about 27 square miles of forested land and 18 small, scattered lakes, and expands into Champion Township and Baraga County. The area contains the 3,675-acre McCormick Research Natural Area designated in 1971, and the Yellow Dog National Wild and Scenic River. It holds Bentley Trail, an historic trail system developed by Mr. Bentley which begins at White Deer Lake Settlement and continues to end at his home on Lake Superior in the Huron Mountain Club (34 miles to the northeast). The trails were made between 1904 and 1920 and are minimally maintained. It is also the site of McCormick Grand camps, and many topographical interests including headwaters of the Dead, Huron, Peshekee and Yellow Dog Rivers as well as many cliffs and waterfalls.

North Country Trail

The North Country National Scenic Trail crosses seven northern states providing 4,600 miles of trail in its entirety. It begins in New York and ends in North Dakota. It was created by Congress in 1980 and is administered by the National Park Service. The Trail passes through three National Parks, twelve National Forests, and one National Grassland. This trail traverses primarily east and west through the northern part of the Township, passing through the McCormick Wilderness and Ottawa National Forest.

Lake Michigamme

Lake Michigamme is one of Michigan's largest lakes covering 4,292 acres or 6.706 square miles and running depths of over 70 feet. Its elevation above mean sea level is 1,550 feet. Most of the Lake is located in Marquette County with its western most part in Baraga County. The main inflow water source is the Peshekee River coming from the north east. Another is the Spurr River, found on the west end. A dam separates the Lake from the Michigamme River on the southern arm of the water body. Many islands and rock beds are in the Lake. There is an abundance of fish including Smallmouth Bass, Northern Pike, Walleye, Rock Bass and Whitefish in the deeper parts. The Lake is a site for many types of outdoor recreation including swimming, boating, fishing, sailing, and camping. There are several resorts, campgrounds, and boat launches located along the shoreline.

Regional Recreation

The County of Marquette offers an excellent variety of recreational facilities for residents and visitors. The County itself owns, operates, and maintains three recreational facilities: Sugar Loaf Mountain, Perkins Park, and the Big Bay Harbor of Refuge. Sugar Loaf Mountain is one of the most popular scenic overlooks on the central Upper Peninsula coastline.

***Michigamme Township
RECREATION PLAN 2021-2025***

The region has several water-oriented recreational opportunities including Lake Superior, Lake Independence, Lake Michigamme, the Greenwood Reservoir and countless inland lakes and streams. Regional parks include Presque Isle Park, Perkins County Park, Craig Lake State Park, and Van Riper State Park. State-owned lands and private lands under the Commercial Forest Act are available for public recreational use.

Cross-country skiing is a very popular sport in this region. Several trails and recreation areas found here are the Fit-Strip in the City of Marquette, The Noquemanon Trail Network in Marquette, Blueberry Ridge Trail in Marquette, Presque Isle Park in Marquette, Anderson Lake Trail in the Escanaba River State Forest, Kawbawgam Ski Trail in Chocolay, Maple Lane Ski Area in Skandia, Al Quaal Recreation Area in Ishpeming, Negaunee Community Center Ski Trail and Kivela Road Trail in Negaunee, and the Iron Ore Heritage Trail. The trails are groomed and maintained by local ski clubs in cooperation with local governments. Downhill skiing is also an option at Marquette Mountain.

A vast Snowmobiling/ORV Trail System and abundant snowfall draw thousands of visitors to Marquette County every year. The routes connect to trails throughout the Upper Peninsula and northern Wisconsin providing hours of opportunity for riding.

4. ACCESSIBILITY ASSESSMENT

As with all public facilities, Michigamme Township is attempting to improve accessibility to all our recreation facilities. These include installing ramps and improving sidewalks and roads and designating areas for handicapped parking. Because of the small size of our Township and significant recreation facilities with limited resources the Township has attempted to expend resources in a way to benefit the largest number of its residents. As park improvements are made the Township will attempt to improve accessibility.

Assets and ADA Compliance Rating:

1. Michigamme Township Park, Rating 4
2. Michigamme Township Campground and Beach, Rating 1
3. Block Park- corner of Maple and Barnum Street, Rating 1
4. Michigamme Township Community Building, Rating 4
5. Michigamme Township Ice Rink, Rating 1

Michigamme Township
RECREATION PLAN 2021-2025

The tennis court and basketball court resurfacing and refurbishing will be designed and constructed to Universal Access Standards. The townships plan is to strive for Universal Access Standards for any new remodels or projects. The Township Community Building remodeling was dedicated in 2004 and was compliant with ADA Standards in effect at that time. That is the last major project undertaken by the Township. The grant that was withdrawn for the campground at the beach was designed for Universal Access.

In the future, plans for additional recreation assets or refurbishing of facilities will be designed and built to Universal Access Standards.

5. DESCRIPTION OF PLANNING PROCESS and PUBLIC INPUT PROCESS

Public input for the update of the recreation plan came from many sources. The most influential input came from a recent community survey conducted by the Township Planning Commission in July and August 2018. The survey was answered by 180 of the Township's 296 residents which was an impressive participation rate. Please refer to Appendix 1 for the survey that was sent to all the residents and the analysis of the 2018 survey completed for the Township by CUPPAD in January 2019.

Because Michigamme Township is a small township in terms of population, interactions with citizens largely occur during the course of the year, while out an about or at various community meetings, celebrations, and activities. The Township Board meeting allows public input at two different times at all meetings. When recreation issues are discussed input from citizens are encouraged and welcomed. All this input was incorporated in this plan.

The Planning Commission meetings are all open to the public with opportunities for public comment at all meetings.

This past year the Township had a controversial issue with the possible sale of township property on the lake shore. Much public opinion was given at this time.

Michigamme Township officials attend the annual Lake Michigamme Property Owners Association meeting, where input from lake residents is solicited and used in the development of the recreation plan.

Survey Results

The July and August 2018 survey asked residents to rank the importance of non-essential township services. The following priorities were identified.

1. Michigamme Township Park – 754 points
2. Boat Launches – 675 points
3. Michigamme Beach – 661 points
4. Museum – 621 points
5. Library – 589 points
6. Cemetery – 505 points
7. Proposed Michigamme Campground – 395 points

The general sense of the survey was that residents prefer to maintain existing assets over developing new ones. Please refer to Appendix 1 for the Michigamme Township Development Survey instrument and the January 2019 CUPPAD analysis of the survey.

6. PAST GRANT HISTORY

Michigamme Township received a recreation grant for The Michigamme Park in 1975 from the Land and Water Conservation Fund. That grant included the original construction of the basketball and tennis courts. That grant also included a fenced ball field, a storage shed, a pit toilet and signage, and site preparation. These courts have not been updated since construction using the grant funds. This grant number was 26-00580. The original grant amount received was \$29,635.36.

In February of 2016, Michigamme Township applied for a DNR Public Outdoor Recreation Grant through the Land and Conservation Public Fund. This grant was intended to resurface the outdoor tennis courts and outdoor basketball courts but was denied.

In January of 2017, the DNR awarded Michigamme Township a Recreational Passport Grant of \$45,000 with a \$15,000 Township match to be used to develop the Michigamme Beach Campground for campsites and flush bathrooms. This grant was ultimately not accepted by the Township as the construction bids far exceeded the allocated funds.

7. GOALS AND OBJECTIVES

The following Recreation goals and strategies provide an Action Plan for improving recreation opportunities and facilities in Michigamme Township.

Preserve and enhance public access and enjoyment of unique natural amenities and existing recreation facilities

Promote a healthy year-round lifestyle in the Township based upon access to the surrounding natural environment and improve on existing recreational facilities.

Goal: To preserve and enhance public access and enjoyment of unique natural attributes of Lake Michigamme.

- A. The survey of Michigamme Township residents indicated that maintenance and improvement of Michigamme Township Park, boat launches, and Michigamme Beach should be our highest priority. Also, of interest, but of lower priority according to our survey, is the proposed Michigamme Campground.
 - 1. To build a universally accessible fishing dock at the Michigamme Beach Park.
 - 2. To replace the boat launch at Michigamme Beach and replace pit toilets with flush toilets and space for a changing room.
 - 3. To repair the outdoor tennis courts and outdoor basketball court at Michigamme Township Park.
 - 4. To provide universally accessible parking at all Michigamme Township Parks.
 - 5. To create appropriate signage for all Michigamme Township recreational properties.
- B. The survey also showed that residents have a strong interest in developing an all-season multi-use trail through Michigamme Township to connect with the Heritage Trail and the Baraga County trails. The Township Board has passed a resolution to support the development of the trail as proposed. This trail aligns with the long-range strategic plan of the Township. A multi-use trail would serve the needs of these residents and would likely attract outdoor enthusiasts of these sports to visit our community.
 - 1. To collaborate with all other governmental units to make this trail a reality.
 - 2. To explore development of additional trails exclusively for cross country skiing, snowshoeing, and mountain biking.

Goal: To improve opportunities for non-residents to visit our community and appreciate the recreational opportunities available here.

**Michigamme Township
RECREATION PLAN 2021-2025**

- A. To improve Michigamme Beach/Campground making it safer, efficient, and more attractive.
- B. Develop a trailhead in the village to access the multiuse trail that passes through Michigamme Township.

Goal: To improve both active and passive recreational opportunities of all age groups and special populations.

- A. To obtain additional exercise equipment for the fitness room and improve signage.
- B. To arrange for individuals to teach exercise classes or enrichment classes at the Township Community Building.
- C. To continue to support the ice-skating rink with possible addition of benches and a warming hut.

8. ACTION PROGRAM

The following Action Plan sets priorities for the township. It must be noted, however, that the township depends on private partnerships to successfully complete projects. The township is open to taking on an appropriate project even though it's not listed in the Action Plan (however, any proposed project must be shown to be relevant to the township's previously identified Goals and Objectives).

Project Name	Sponsor	Estimated Cost	Potential Funding Source
Establish a Village trail head to access DNR Multi-use Trail	Township Moose Country Snowmobile Association	Minimal	Township Moose Country Snowmobile Association
Update Boat Launch at Michigamme Beach	Township	\$15,000	Township
Universally Accessible Parking at all Michigamme Township Parks	Township	\$20,000	Township
Create Signage to all Michigamme Township recreation properties	Township DDA	\$5,000	Township and DDA

**Michigamme Township
RECREATION PLAN 2021-2025**

Continued...

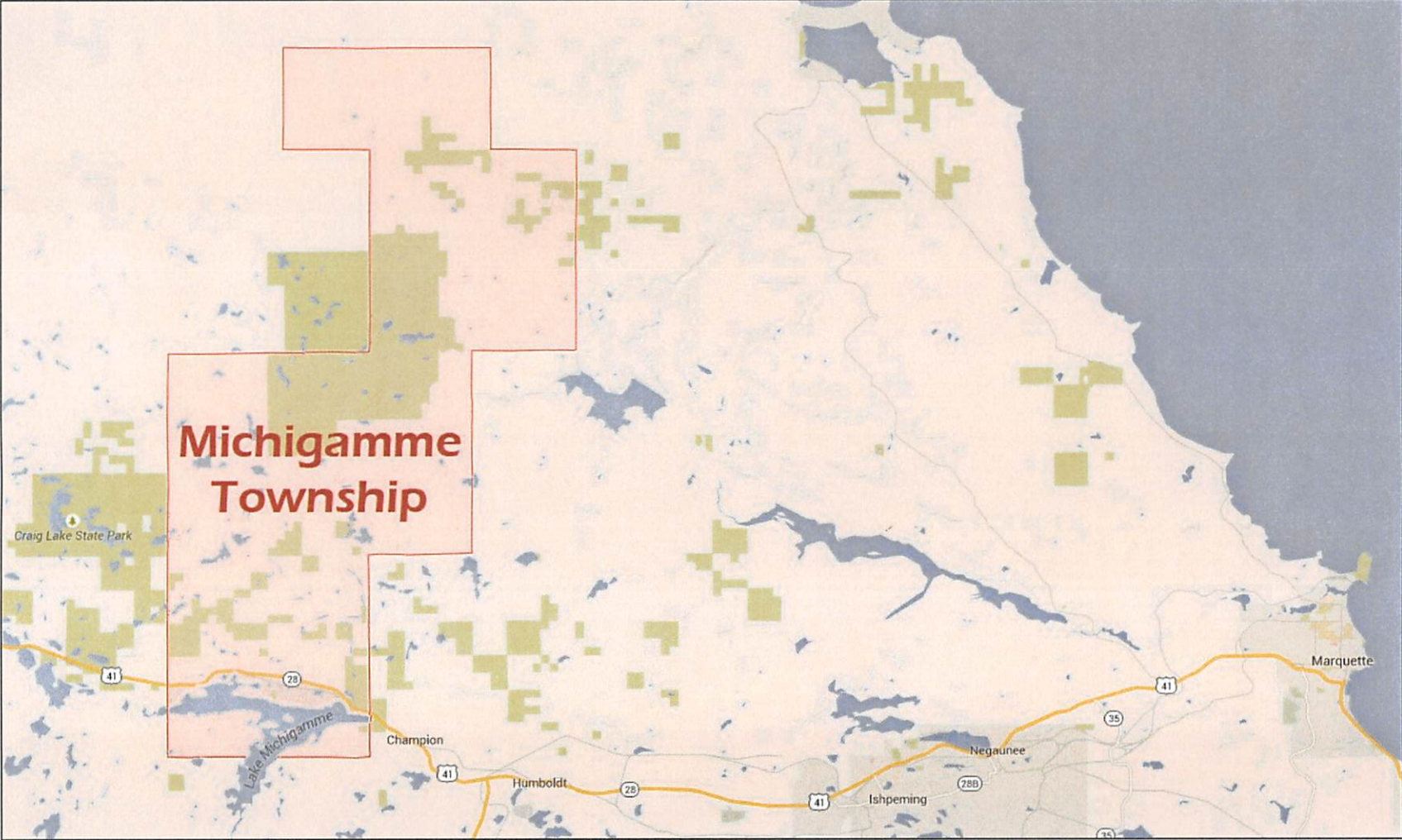
Project Name	Sponsor	Estimated Cost	Potential Funding Source
Resurface outdoor tennis and basketball courts at Michigamme Township Park	DNR Township	\$90,000	DNR Recreation Grant Township
Build Universally Accessible Fishing Dock at Michigamme Beach	Township	\$25,000	DNR Grant Township
Improve Campground at Michigamme Beach and Develop Flush Toilets and Change House	Township	\$200,000	DNR Grant Township
Continue to support DNR all season multi-use trail through Michigamme	Township	Minimal	Township
Explore development of trail for cross country skiing, snowshoeing, and mountain biking	Michigamme Township Spurr Township	\$35,000	Spurr and Michigamme Townships DNR Grant
Increase use of Community Building with new exercise equipment and exercise and enrichment classes	Michigamme Township Spurr Township	\$12,000	Michigamme and Spurr Townships West Marquette County Health Foundation
Continue to support village ice rink with benches and warming hut	Michigamme Township	\$10,000	Michigamme Township

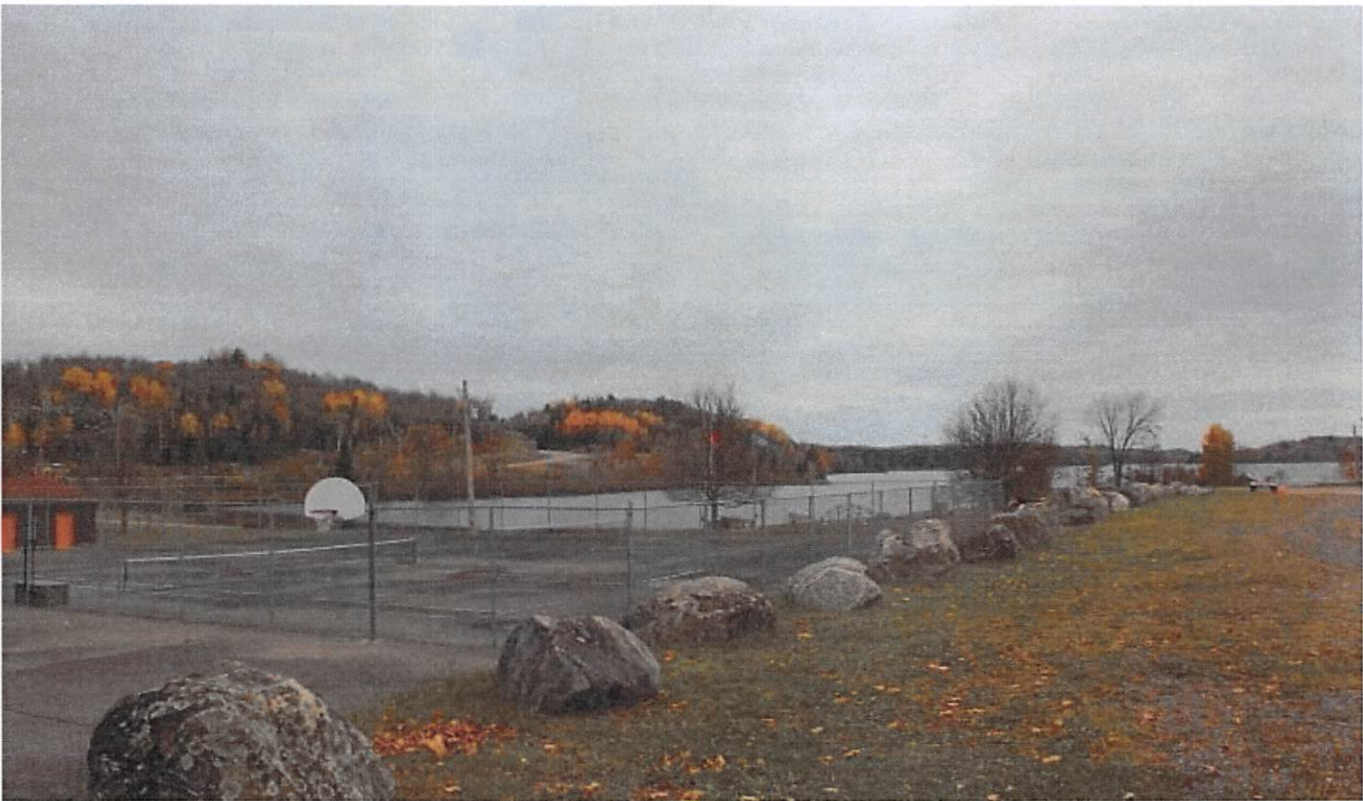
Michigamme Township
RECREATION PLAN 2021-2025



— = 1/4 mile

*Michigamme Township
RECREATION PLAN 2021-2025*







APPENDIX 1

Michigamme Township Development Survey

and

Michigamme Township Development Survey Analysis
January 2019

Michigamme Township Development Survey

Please complete both sides of the survey.

1. Are you a resident or property owner in Michigamme Township?

____ Yes ____ No

If yes, where in Michigamme Township do you live or own property? _____

If no, in which township do you live or own property? _____

2. Number of persons in your household of the following ages:

0-5 _____ 6-18 _____ 19-30 _____ 31-64 _____ 65+ _____

3. Are you a seasonal or full-time resident?

____ Seasonal ____ Full-time

4. When I have questions on Township matters, I look for answers/information from:

	Always	Most of the Time	Some of the Time	Rarely	Not at All
Bulletin Boards	_____	_____	_____	_____	_____
Newspaper	_____	_____	_____	_____	_____
Website	_____	_____	_____	_____	_____
Township Newsletter	_____	_____	_____	_____	_____
Word of Mouth	_____	_____	_____	_____	_____
Township Office &/ or Board Meetings	_____	_____	_____	_____	_____
LMPO Website	_____	_____	_____	_____	_____

5. The following are essential services provided to Michigamme Township residents. Rank these services from 1 – 7 in terms of the priority this service should take when allocating our resources.

(1- Most important, 2- less important, etc.-----7-least important) Use each number only once.

- | | |
|--|-----------------------------|
| ____ Fire Department | ____ EMS |
| ____ Broadband (Strong Internet Service) | ____ Senior Services |
| ____ Economic Development (Business and Tourism) | ____ Street and Road Repair |
| ____ Sewer | |

5. a. Are you in favor of vacation home rentals?

Yes No Makes no difference to me.

6. Each of the following is a service that Michigamme Township provides to its residents that many other communities do not provide.

Rank the following services (1-7) in terms of their importance to you. Use each number only once.

Library

Museum

Cemetery

Michigamme Township Park

Michigamme Beach

Proposed Michigamme Beach Campground

Boat Launches

Comments:

7. Which of the following would be additional amenities that you would personally use:

(Check all that apply.)

Adult Enrichment Classes

Adult Exercise Classes

Kid's Activities and Programs

Multi-Use Trail (Motorized and non-motorized)

Cross-Country Ski Trails

Community Gathering Area (Commons)

8. Please share with us any other concerns you may have or comments about how Michigamme Township should proceed as we plan for the future.

Michigamme Township Development Survey Analysis

January 2019



Introduction

To prepare for a future update of Michigamme Township's 2015 Master Plan, the Planning Commission developed and distributed a community survey to better understand residents' habits, preferences, and opinions on a range of community development-related questions. The results of this survey are intended to guide and support future community planning and development considerations as the Planning Commission and elected officials develop new strategies for the future of Michigamme.

Community leaders were successful in acquiring 180 survey responses. According to the U.S. Census Bureau, the estimated population of Michigamme Township in 2017 was 296 persons, of all ages. It is noted that this estimate only includes a count of those claiming their primary residence in Michigamme Township, while the survey included both seasonal and full-time residents. This fact makes it difficult to provide an accurate estimate of the percentage of community residents surveyed; however, in comparison to Census Bureau's population estimate, the survey responses are remarkably high for a rural community of Michigamme's size and the results provide a sufficient level of confidence to support future policy considerations.

Demographics and Characteristics of Survey Respondents

Survey recipients were asked to provide the number of persons, by age group that are members of their household. The age groups consisted of those 0-5 (very young), 6-18 (school aged), 19-30 (young adult), 31-64 (older adults), and 65+ (seniors). This question was not intended to confirm the demographics of the community, but rather to add context to the survey responses by providing information on the types of households sharing their input.

Number of Persons and Ages of Persons in Households

Responses Overall			
Number of Survey Responses Overall	Total Count of Individuals Captured by Survey	Average Household Size Among All Survey Respondents	Responses Overall as a Percentage of Total Count of All Age Groups
180	336	1.87	100%
Ages 0-5 (Very Young)			
Number of Survey Responses with Very Young Persons	Total Count of Very Young Individuals Captured by this Survey	Household Average of Very Young Among Households with Very Young Individuals	Very Young as a Percentage of Total Count of Individuals in this Survey
4	7	1.75	2.1%
Ages 6-18 (School Aged)			
Number of Survey Responses with School Aged Persons	Total Count of School Aged Individuals Captured by this Survey	Household Average of School Aged Among Households with School Aged Individuals	School Aged as a Percentage of Total Count of Individuals in this Survey
13	21	1.62	6.3%
Ages 19-30 (Young Adult)			
Number of Survey Responses with Young Adult Persons	Total Count of Young Adult Individuals Captured by this Survey	Household Average of Young Adults Among Households with Young Adult Individuals	Young Adults as a Percentage of Total Count of Individuals in this Survey
10	22	2.44	6.6%
Ages 31-64 (Older Adult)			
Number of Survey Responses with Older Adult Persons	Total Count of Older Adult Individuals Captured by this Survey	Household Average of Older Adults Among Households with Older Adult Individuals	Older Adults as a Percentage of Total Count of Individuals in this Survey
66	121	1.83	36%
Ages 65+ (Senior)			
Number of Survey Responses with Senior Persons	Total Count of Senior Individuals Captured by this Survey	Household Average of Seniors Among Households with Senior Individuals	Seniors as a Percentage of Total Count of Individuals in this Survey
98	170	1.73	50.6%

Among the total 180 residents that completed the survey, 82 (or 45.6%) identified as being full-time residents, while 98 residents (or 54.4%) identified as being seasonal residents. According to the 2010 Census, the most recent survey asking the question, approximately 60% of housing in Michigamme Township is identified as *For seasonal use, comparing* closely with the results of this survey which was distributed eight years following the 2010 Census.

Where Residents Turn for Information on Township Matters

Residents were asked what about their frequency of use regarding various sources of information on Township Matters. Answers to this question may be helpful in future Township communication activities as officials consider where their efforts would be most impactful, or where to make improvements. To determine the most commonly referenced methods, answers responding “Always” or “Most of the time” were added together and ranked. Among the 180 responses, the top three most commonly referenced methods for Township news were:

- #1. Township newsletter (104)
- #2. Word of mouth (72)
- #3. Township meetings (65)

Similarly, the responses of “Not at all” and “Rarely” were added together and ranked to determine the least frequently used sources of information on Township news. The least commonly used methods were:

- #4. Bulletin boards (117)
- #5. Township website (121)
- #6. Newspaper (123)
- #7. LMPO website (127)

	Not at all	Rarely	Some of the time	Most of the time	Always
Bulletin Boards	86	31	29	18	17
Newspaper	96	27	38	9	11
Township Website	89	32	31	19	10
Township Newsletter	39	5	33	52	52
Word of mouth	37	11	61	39	33
Township meetings	54	17	44	22	43
LMPO website	105	22	34	10	10

The survey results suggest that most residents prefer to receive their information directly, in a more personal fashion, rather than having to search for information. This means that future efforts to engage residents will be more effective if they attempt to actively engage residents, rather than passive efforts that rely on a resident finding the information.

Ranking Essential Services in Order of Importance

The survey included a question which asked residents about their opinion on the order of importance of essential services. A basic point value system was assigned to priorities to result in an adjusted score. The ranking resulted in the following priorities:

- #1. EMS – 941 points
- #2. Fire Department – 940 points
- #3. Street and road repair – 644 points
- #4. (tie) Broadband – 455 points
- #4. (tie) Senior services – 455 points
- #6. Sewer – 411 points
- #7. Economic development – 409 points

	Most important <-----> Least Important							Adj. Score
	1 (7 points)	2 (6 points)	3 (5 points)	4 (4 points)	5 (3 points)	6 (2 points)	7 (1 point)	
Fire Department	65 (455)	66 (396)	11 (55)	5 (20)	4 (12)	1 (2)	0 (0)	940
EMS	62 (434)	67 (402)	17 (85)	4 (16)	1 (3)	0 (0)	1 (1)	941
Broadband	3 (21)	3 (18)	29 (145)	26 (104)	18 (54)	40 (80)	33 (33)	455
Senior Services	1 (7)	5 (30)	17 (85)	26 (104)	46 (138)	34 (68)	23 (23)	455
Economic Development	4 (28)	1 (6)	13 (65)	22 (88)	35 (105)	40 (80)	37 (37)	409
Street and Road Repair	14 (98)	6 (36)	38 (190)	51 (204)	31 (93)	11 (22)	1 (1)	644
Sewer	3 (21)	4 (24)	27 (135)	17 (68)	18 (54)	26 (52)	57 (57)	411

The results of the adjusted scores indicate that *EMS* and *Fire Department* are nearly tied with scores of 941 and 940, respectively, as the top essential services. This is likely because they related directly to health and safety of residents, which are often the highest priorities for any community. *Street and road repair* fell in third place with 644 points, also regarded highly as an essential need for transportation and mobility. *Broadband* and *Senior services* were tied for fourth place with 455 points each, indicating residents feel a moderate need for both of these services. It is noted that 50.6% of the residents that responded to this survey fell within the *65+* or *Seniors* age group, which would make up the primary demographic for the use of *Senior services*. *Sewer* fell in 6th place with 411 points, likely falling lower on priorities due to the limited coverage of the sewer system across the households in the Township, while others may be satisfied with their well and septic systems. *Economic development* came in last place, with 409 points, likely due to Michigamme being regarded as a place where intensive development is not desirable and could potentially be in conflict with the character of the community. It is also likely that most residents' needs are currently met by other nearby centers of commerce and culture or that seasonal homes in Michigamme are regarded as places to "get away from it all".

Opinions of Short-term Vacation Rentals

The survey included a question asking resident's opinion on vacation rentals, presumably referring to the short-term renting of residential properties for periods shorter than 30 days. 177 respondents answered the question with nearly 43% percent of residents in favor of such rentals and 17% against. Approximately 40% of those surveyed had no opinion on the matter.

Are you in favor of vacation home rentals?	# Responses
Yes	76 (42.9%)
Makes no difference to me	71 (40.1%)
No	30 (17.0%)

If future study or ordinance development on this subject is of an interest, the Township should consider the range of possibilities for short-term rentals, such as: required inspections, number of guests permitted, and the adequacy of police power ordinances that can be used to abate nuisances which may affect surrounding residents.

Priority of Non-Essential Township Services and Amenities

Survey respondents were asked to consider and provide a priority ranking for other non-essential Township services and amenities which are currently provided (with the exception of the proposed Michigamme Campground). Similar to the previous question regarding *essential services*, an adjusted score was applied to result in a ranked order of priority. The following priorities were identified:

- #1. Michigamme Township Park – 754 points
- #2. Boat launches – 675 points
- #3. Michigamme Beach – 661 points
- #4. Museum – 621 points
- #5. Library – 589 points
- #6. Cemetery – 505 points
- #7. Proposed Michigamme campground – 395

	Most important <-----> Least Important							Adj. Score
	1 (7 points)	2 (6 points)	3 (5 points)	4 (4 points)	5 (3 points)	6 (2 points)	7 (1 point)	
Library	19 (133)	18 (108)	19 (95)	28 (112)	26 (78)	23 (46)	17 (17)	589
Museum	18 (126)	25 (150)	21 (105)	24 (96)	30 (90)	22 (44)	10 (10)	621
Cemetery	21 (147)	12 (72)	15 (75)	16 (64)	17 (51)	27 (54)	42 (42)	505
Michigamme Twp Park	30 (210)	42 (252)	24 (120)	26 (104)	17 (51)	6 (12)	5 (5)	754
Michigamme Beach	15 (105)	30 (180)	33 (165)	21 (84)	25 (75)	26 (52)	0 (0)	661
Proposed Michigamme Campground	4 (28)	8 (48)	15 (75)	19 (76)	19 (57)	26 (52)	59 (59)	395
Boat Launches	43 (301)	15 (90)	23 (115)	16 (64)	16 (48)	20 (40)	17 (17)	675

Among the services residents ranked the highest priority, the park, boat launches, and beach ranked the highest. Each of these assets are related to outdoor recreation and are the main attractions for residents and visitors interested in active lifestyles; something Michigamme is well known for. The Museum, library, and cemetery each contribute to Michigamme’s sense of place and community by providing education, history, and culture, but are not significant attractors of seasonal residents who are presumably visiting Michigamme for its unique and pristine natural assets. The proposed Michigamme campground scored significantly lower than the rest of the assets, as it is common on a question such as this that residents prefer to maintain existing assets over developing new ones, if the choice is presented.

Poll of Personal Preferences for Potential Future Additional Services and Amenities

Survey respondents were asked place a check mark for each service they would be personally interested in which could be offered by the Township if there were sufficient demand. The results follow:

Rank	Additional Amenities You Would Use	Tally
1	Multi-use Trail	113
2	Community Gathering Areas	76
3	Cross Country Ski Trails	70
4	Adult Enrichment Classes	64
5	Adult Exercise Classes	55
6	Kids' Activities and Programs	53

The interest levels identified for these additional services indicate that outdoor recreation and public spaces are the highest priority for future community investments. These types of assets provide a reason for residents and visitors alike to come to Michigamme. Community activities, such as classes and Kids' programs scored lower on interest levels; however, it should also be noted that only 9.4% of survey respondents (17 total) represented a household that included children of any age. It is also possible that classes and programs may be seen by the public as adding long-term costs and administrative responsibilities to the Township, whereas recreational assets and public spaces are typically a single, large up-front investment with minor long-term costs for maintenance.

Appendix A: Other Concerns and Comments for the Future

Open-ended responses were also solicited on the survey to determine other concerns or thoughts for the future of the Township's development. To best summarize and display the trends in these comments, a tool called a *word cloud* was generated, which is an image that presents the most commonly used phrases and words. The size of each word is relative to the number of times it was mentioned. Based on these comments, the word cloud on the first page of this report was generated. A full list of open-ended response follow, in no particular order:

- Academic and craft adult enrichment classes. Trails for hiking, snowshoeing, fitness trek stations. A work out area in the comm bldg would be nice. We need things that would be focused on keeping and bringing in interests for 20-50 aged people. Fishing piers at both parks. Building and cleaning all sidewalks, not just Main St.
- All Michigamme Twp. services are important!
- Any motorized trails leading into town would be an inconvenience for the town residents without police patrol consent.
- Blight!
- Boat slips for residents.
- Bulletin boards should have more information. We were disappointed in the town "Entry" sign or billboard. A hummingbird? Sure, hummingbirds are a delight but they are not at all unique to Michigamme. What is unique is the steamer or moose. We should claim our right to where it all began, Moosedrop! Let's claim our uniqueness. "Where the moose run loose", remember?
- Cemetery is necessary to maintain for those of the past and the future.
- Clean up blight. Restrictions on rentals. Enforce property owners to keep yards and homes to the rules of the township. Welcome more economic development and businesses. Tourism throughout our township. Encourage younger generations to get involved.
- Clean up the Township.
- Continue to upkeep Peshekee Grade Road! The twp. services are all important but do not apply to us.
- Don't we already have a township hall and township park? We don't need more community gathering places.
- Easy does it.
- Economic Development
- Encourage economic development of downtown main street and restoration of old buildings. The downtown area is looking very nice and this will eventually draw business and residents alike. Thank you and keep up the good work!
- Enforce Blight Ordinance.
- Even though County Road 607 is a county road, more effort should be put into convincing the county to continue repairing ASAP! It should be finished in the near future, worst road in the county, which takes away from Michigamme!
- Financial Planning, Effective Leadership

- Get and keep more people, stores, and businesses.
- How about a small marina at the park, how about removing some more empty homes? I know you have started this, keep up the good work. It shows that you care. Thank you.
- I believe that simple things like camp sites and trails are best and easiest way to attract people. Good place to start, once they're spending money is the next they'll do in area- stores and restaurants!
- I thank you for putting in funds to do some road repair of Co Rd 607. It could use a few more miles of repair. Thank you.
- I think having this survey was a great idea. People feel empowered when they are asked for their input.
- I think you do a great job! Hoping that you can figure out a way to have brush/ branch disposal area back open.
- I wish lands owned in town around the lake be taken care of: grass cut, brush cut, basic cleaning of yards.
- I would like to see a blight law enforced. There are places with 4+ non-running cars rusting away and unused trailers.
- I would not use the kid's programs, but feel they are important. Continue enforcing the blight ordinance.
- I wouldn't use kids' programs but they should be strongly considered.
- Keep up the good work.
- Keep up the great work! We greatly appreciate the garbage pickup and annual dumpster days. We rely on the summer Michigamme Township schedule of events and try to participate in the community!
- Lake front greatest twp. asset! Very special! Should be priority number 1 of the twp.
- Like to see a survey of the fish in Lake Michigamme
- Maintaining the dam on Lake Michigamme.
- Michigamme Twp. taxes are insanely higher than neighboring twps. - FACT - why?
- Millage rates are too high- unfair burden on non-residents. Township has way too much money. Township officials should treat each other better. Shameful.
- More boat docking in park area, Mt Shasta Bay
- More kids' activities, why were there no children's bike helmets at National Night Out, someone had to contact MGH for free ones. Kids need more community funds to enrich and teach them valuable skills.
- More police patrols, weekends and nights. Speed limit signs on Mesnard street, 25mph.
- Need stronger enforcement of blight laws and zoning violations.
- Not at all in favor of Vacation Rentals especially if it's not at a minimum 3-month rental. We have a rental next to our camp and never know who will be there. We have had some that were very disruptive. Three-day rentals are way too short, it is like a hotel next to you. There is many times multiple families, several cars, and many are not respectful of other people's properties. Three-month minimum rentals would help, but we are still strongly against.

- Nothing at this time. We have only been here a month. It is such a beautiful town. My 14-year-old son has already made friends and I know he is safe when riding his bike. Thank you for having us.
- Our only concern is the continued blacktopping of Co. Rd. 607, please continue.
- People vacationing in our area is key to our economic prosperity! As a township!
- Place to dump yard waste with paid employee to monitor dumping.
- Please continue the re-surfacing of Co Rd 607- Peshekee Grade Rd. The two miles that were re-surfaced this summer are phenomenal. Thank you!!
- Please put Township board agenda and minutes online. Also, candidates for board positions should have to run on the ticket they are registered under.
- Provide access for ATV's, snowmobiles, other than roads. Provide a legal way to drive on trails north of 41/28. As it is now, we are completely cut off. Work with property owners who have gated off long used roads.
- Recycling pickup with garbage. Make homeowners clean up their junky yards! Tear down or burn down eyesore buildings on Main Street.
- Repaving of the Peshekee Grade Road
- Road maintenance needs improvement. Black top is not enough.
- Satisfied with present guidance scheme. Keep up the good work.
- Save for the future. Be fiscally responsible. Maintain the current infrastructure. Support the first responders and the fire department. Always move forward. Prevent stagnation.
- Take advantage of what I believe is the greatest asset to the township- the lake- do all possible to drive business and tourism growth.
- Taxes are far too high and discrimination based on use is wrong. Companies pay next to nothing.
- Thank you
- Thank you for the excellent up keep of the cemetery. People visit the museum and are very surprised at all the historical information. The library is an asset to the community. These things encourage growth in the township. I would encourage the township and property owners to maintain their properties. To cut the brush and grass on all properties. The Main St has several lots that need attention.
- The boat launch/ park on west side of lake, the trees/ brush needs to be cleared or cut back, it is hard to see coming traffic from the south when pulling out, especially with a boat or trailer.
- The flowers on Max St are pretty but too tall by the railroad and Main St. A smaller variety should be grown.
- The proposed arrangement at Michigamme Beach should not be built to compete with paying businesses. Management and maintenance make it a nightmare!
- The proposed Michigamme Beach Campground would cause congestion which would be unfair to the full-time residents. We are opposed to this.
- The road to Arfelin Lake (County Road 607) needs to be repaired over its entire blacktop surface. Thanks for sending out the survey!

- The two old unpainted buildings add charm to Michigamme. So glad they are still there!
- The twp. needs a better infrastructure: water, natural gas, etc. Without these types of improvements, the town has less chance for any type of growth.
- There is only one bulletin board in town. The website is a joke. You need to advertise more than at the community building. By law you need to post meeting notices in 3 different spots.
- There should be more resources, activities, hang out places for kids. I am missing the teen center and other safe spaces for teenagers. More street lights on Railroad. Property owners should get a tax or sewer incentive if actively participating in neighborhood beautification activities. Need people who actively know the woods to participate in bike/ foot trail development and maintenance. Fixing beach at the ballpark, selling empty lots, tax breaks on new buildings.
- These questions don't pertain to seasonal camps in our area. We are located 35 miles from Michigamme and the only thing we keep up with is the Eagle mine, 4 miles from our place.
- To preserve the old buildings on Main Street, crucial to preserve history. It's what makes Michigamme unique and special. Business and employer development is crucial.
- Too much noise coming from speakers off the lake.
- Upkeep of Properties
- Utilize the beauty of Main Street
- Vacation home rentals must be handled properly.
- Vacation home rentals should be limited. Would not want to see places bought up specifically to be used as "Come all" rentals.
- Vacation home rentals will bring tourism and business into town!
- Vacation rentals could generate income for the township, even if it requires a permit or license. Yard waste drop off not listed but definitely worth continued funding. Are meetings for the Planning Commission open to the public? Suggest promoting tourism more with offerings such as a coffee shop, bakery, ice cream parlor, restaurants.
- Vacation Homes need managing.
- We appreciate the attention to Co Rd 607 and hope it continues. Many people on the road pay taxes which go to the use of the twp. We don't live there other than spring and fall, however, expect that our tax dollars should be used to provide decent access to our property.
- We are boat owners, use the boat launches routinely and their maintenance is very important.
- We enjoy seeing the old buildings in town.
- We use the recycling program. We commend the township on trash pickup and availability. The museum is unique and excellent, deserves twp. support. We think the twp. does an excellent job on beautification of streets and cemetery maintenance. We appreciate the improvement of the Peshekee Grade Residents of Arfelin Lake deserve continued improvement of the Grade
- Why is there a ban or rule preventing chicken raising on your own property in Michigamme Twp? One can raise chickens or other fowl, animals in large cities, seems like a stupid rule!
- Would love for boat launch to be re-done and to include a long dock, as most docks at launches are too short to dock boat when weather/ wind are not favorable.